



Sarasota County Emergency Management

Flash Report #16



March 13, 2020

Activation Level 3: Monitoring

Event Name: COVID-19

Watch, Warnings, Advisories

International Travel Advisory
Nile Cruise Advisory
Advisory on Port Everglades

Possible Impacts

More cases of COVID-19 are likely to be identified in the coming days, including more cases in the United States. It's also likely that person-to-person spread will continue to occur, including in communities in the United States. It's likely that at some point, widespread transmission of COVID-19 in the United States will occur.

Timing

Symptoms may be mild to severe and may appear 2-14 days after exposure.

Key Points

There is currently no vaccine to prevent COVID-19. The best way to prevent illness is to avoid being exposed to this virus. As a reminder, the Department always recommends everyday preventive actions to help impede the spread of respiratory diseases, including:

Avoiding close contact with people who are sick

Staying home when you are sick and avoiding contact with persons in poor health;

Avoiding touching your eyes, nose and mouth with unwashed hands;

Covering your cough or sneeze with a tissue, then disposing of the tissue;

Washing your hands often with soap and water for at least 20 seconds, especially after going to the bathroom, before eating, after blowing your nose

Situation

After a conference call with the Governor's Office and the Department of Education, Sarasota County Public Schools will be closed the week after spring break (March 16th - March 27th).

As of 3:30 p.m. today, two new cases of the COVID-19 virus were identified in Sarasota County residents, all in all 17 new cases were reported across the State.

A 50-year old female New York resident who is a seasonal Sarasota County resident who has not been in the Sarasota area since before Christmas has tested positive for COVID-19 in Broward County. This individual is isolated and will continue to remain isolated until cleared by public health officials. It is currently unclear whether this was a travel-related case; the epidemiological investigation is ongoing.

A 70-year old male Massachusetts resident in Sarasota County has tested positive for COVID-19. This individual is isolated and will continue to remain isolated until cleared by public health officials. It is currently unclear whether this was a travel-related case; the epidemiological investigation is ongoing.

Governor DeSantis announced that the State has ordered an additional 2,500 test kits to supplement the adequate resources already available to test for COVID-19.

These additional test kits will enable the Department of Health, working with Florida health care providers, to test up to an additional 625,000 individuals.

President Donald Trump announced a national state of emergency along with a public-private partnership to increase testing for COVID-19. Once more information is received it will be shared with partners via e-mail.

State universities have been directed to make plans to transition to remote instruction as soon as possible.

Gov. Ron DeSantis announced an executive order Wednesday afternoon. The order restricts visitors from nursing homes and assisted living facilities for a period of two weeks after they: Show symptoms of any respiratory infection or are sick, travel internationally, have been aboard a cruise ship, visited an area with community spread of the virus, or live in an area with community spread.

DOH continues to visit all licensed long term care facilities in Sarasota County to ensure proper COVID-19 infection control guidelines as established by the CDC are being used to prevent the spread of the virus

The Florida Department of Health reminds everyone that the elderly and those with underlying medical problems like high blood pressure, heart problems and diabetes are more likely to develop

Sarasota County Actions

Sarasota County will be canceling all events with anticipated attendance of 250 individuals or more at county facilities for the next 30 days beginning Friday, March 13.

EM will continue City /County /Constitutional Leadership tomorrow afternoon and attendees will receive an invitation.

The Emergency Management Team is monitoring the spread of COVID-19. EM is coordinating, planning, and implementing preparedness actions with the Department of Health. DOH Sarasota is coordinating preparedness actions with the State and coordinating with local partners as needed.

Sarasota County Emergency Management will be participating in conference calls with the Florida Division of Emergency Management every Monday, Wednesday, and Friday.

The EM team is coordinating critical resource needs with the Department of Health, Public Safety, Hospitals, and other partners. These partners received an invite to the Smartsheet form to input available resources.

Locations with Confirmed COVID-19 Cases



Directors

All personnel should ensure staff is situationally aware of the spread of COVID-19 and personal protective measures to reduce or prevent influenza like illnesses. Any information regarding employee communications and messaging coordinate with Sarasota County Communications Department. All department and agencies with potential press releases coordinate with Sarasota

blowing your nose, coughing or sneezing; - If soap and water are not readily available, use an alcohol-based hand sanitizer with at least 60% alcohol. Always wash hands with soap and water if hands are visibly dirty;

Cleaning and disinfecting frequently touched objects and surfaces using a regular household cleaning spray or wipe.



County Communications Department by calling 861-NEWS or news@scgov.net. If the situation escalates, Flash Reports will be replaced with Situation Reports.

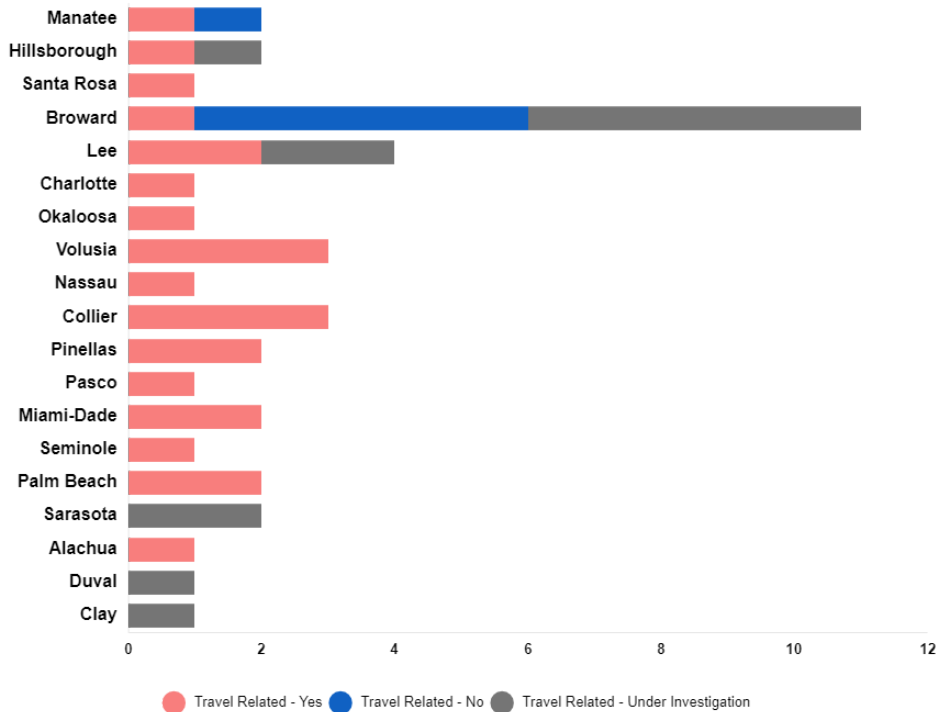
Essential Elements of Information

Level 2 State EOC Activation	Declared State of Emergency	1413 People Monitored to Date	478 Total Negative Results
2 Florida Resident Deaths	45 Total Florida Cases	365 Currently Being Monitored	221 Total Pending Results

All Agencies and Partners

Please ensure that all field personnel that do not receive e-mail communications are informed of daily updates and are provided the Florida Department of Health and CDC information links to ensure proper protective measures are taken.

Positive Florida Cases by County



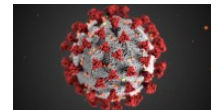
Emergency Order



Click to View Executive Order



Click to View Public Health Emergency Declaration



How to Prepare and Take Action

At Home



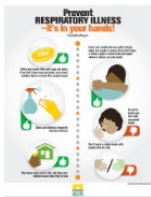
At School



At Work

The CDC does not recommend that asymptomatic, healthy people wear a facemask to protect themselves from respiratory diseases, including

Resource Tool Kit



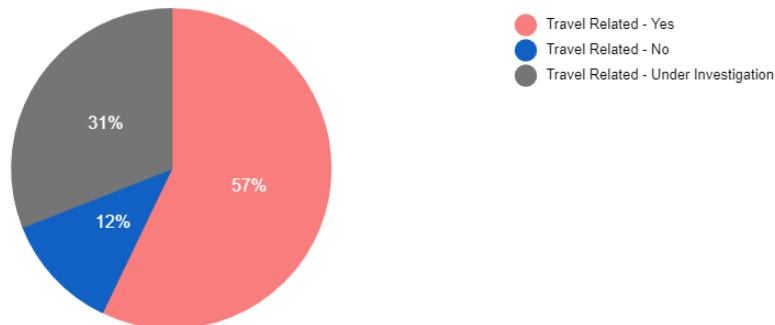
CDC Traveler Info Card



What You Need to Know



Positive Cases Travel Related



Nile Cruise Advisory

The department is advising all individuals who traveled on a river cruise on the Nile River in Egypt in February 2020 to self-isolate for 14 days following their date of return to the United States. Several passengers in the United States recently developed symptoms and have been confirmed to be infected with coronavirus disease 2019 (COVID-19), including two presumptive positive cases in Florida.

Travel Levels

Warning - Level 3, Avoid Nonessential Travel

Prepared By:
James Podlucky
Approved By:
Edward J. McCrane

International Travel Advisory



DOH is advising all individuals who have traveled internationally to follow the new CDC guidelines Level 3: Mandatory 14-day self-isolation and practice social distancing upon return to the United States. Social distancing includes avoiding going out in public and close personal interactions. If you become symptomatic, immediately self-isolate and contact your county health department or health care provider.

Level 2 and Cruises: Monitor your health and limit interactions with others for 14 days after returning to the United States. If you become symptomatic, immediately self-isolate and contact your county health department or health care provider.

For more information regarding current CDC travel advisories related to COVID-19, visit: <https://www.cdc.gov/coronavirus/2019-ncov/travelers/index.html>

Advisory on Port Everglades

The Department, through an extensive epidemiological investigation, identified this new case as the third positive case of COVID-19 associated with Port Everglades in Broward County, Florida. Further, all three cases are connected to or employed by Metro Cruise Services – a company that operates at Port Everglades.

The Florida Department of Health recommends all individuals experiencing symptoms who have recently travelled through Port Everglades to immediately contact their County Health Department or health care provider and self-isolate for 14 Days.

The Department also recommends employees of Metro Cruise Services at Port Everglades with any association to these cases self-isolate at home.

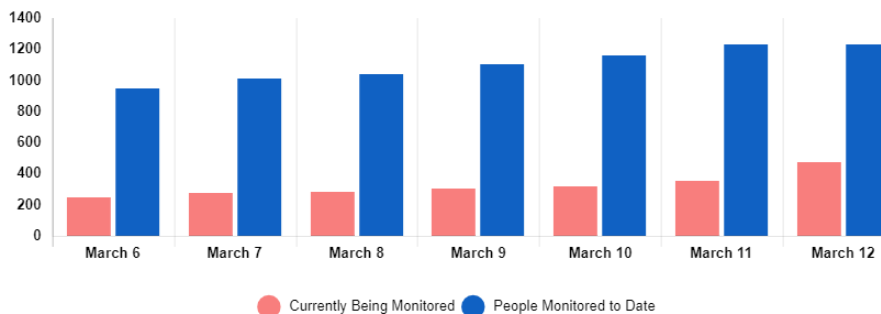
The Department is working to connect with all employees at Metro Cruise Services who may have come into contact with the three individuals who have tested positive for COVID-19 to provide the employees with the appropriate guidance and monitoring.

The department is working in close consultation with the Centers for Disease Control and Prevention (CDC) on this investigation.

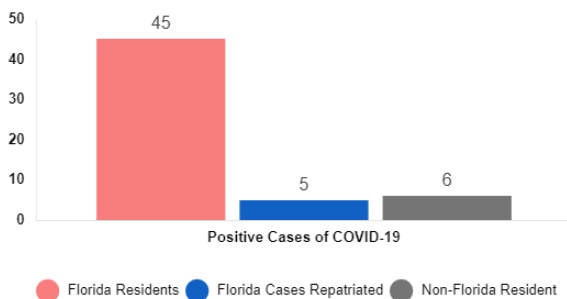
The CDC recommends that individuals with recent travel history on a cruise to monitor their health for 14 days and, if they develop symptoms, to immediately self-isolate and contact their County Health Department or health care provider.

Please call the state of Florida's 24/7 hotline for COVID-19 at 1 (866) 779-6121 for assistance in connecting with your County Health Department or health care provider.

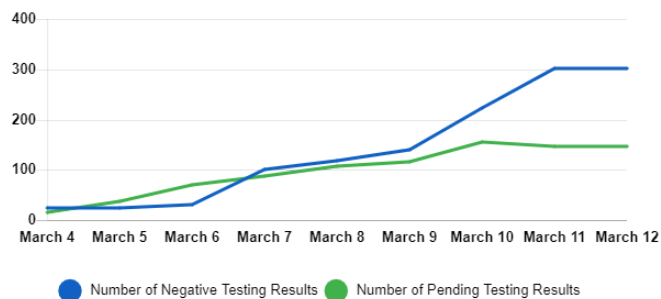
COVID-19 Monitoring Timeline



Positive Cases of COVID-19



COVID-19 Negative vs Pending Test Results



People Under Public Health Monitoring: The number of people under public health monitoring includes those at risk of having been exposed to COVID-19 who are monitoring their health under the supervision of public health officials.

Florida Cases Repatriated: The United States Department of State officially coordinated the return of a person living in Florida to the United States and those persons are isolated at a federally designated site until healthy. A repatriated case is when the United States Department of State officially

coordinates the return of a Florida resident to the United States.

Presumptive Positive: A Presumptive Positive is when a state health lab has a positive test without CDC confirmation.

Confirmed: A Confirmed status is given when the Presumptive Positive sample is then confirmed by the CDC.

Flash Reports



FDOH COVID-19



CDC COVID-19



FAQ

