



**Planning Department
COMMUNITY WORKSHOP
APPLICATION NO. 18-CW-12
DISCUSSION OF A STREET VACATION**

Date: May 14, 2018

Time: 6:00 P.M.

Place: Sarasota High School--Auditorium
2155 Bahia Vista Street
Sarasota, FL 34239

As required by the City of Sarasota, a community meeting is being held to discuss a proposed street vacation for the approximate 765' segment of School Avenue, between Tami Sola Street and Hatton Street, that extends through the Sarasota High School campus. Since 1997 this road segment has been closed to vehicular access from 6:30 am – 2:30 pm. However, the campus has always been publicly accessible via the bike/pedestrian access that runs along this same segment of School Avenue.

In order to provide for the safety and security of the over 2,000 students that attend this public high school, this segment of School Avenue is being proposed for vacation by the Sarasota County School District in order to control access to the campus by all users at all times. In the future, the District will install fences around the entire perimeter of the campus and establish a single-point-of-entry to the campus for visitors and controlled access to students at the start of school and dismissal. The subject area contains underground utilities and a utility easement would be granted back to the City. As such, the vacated segment is expected to feature a school courtyard with no buildings or permanent structures.

The District is working with the City to identify and construct appropriate improvements along Hatton Street, Shade Avenue, and Tami Sola Street to accommodate additional bike-pedestrian traffic on these roadways.

AGENDA

I. Opening and Introduction

- A. Welcome/Sign-In
- B. Meeting Purpose
- C. Agenda Review
- D. Presenter Introductions

II. Presentation

Kathie Ebaugh, Director of Planning, Sarasota County Schools

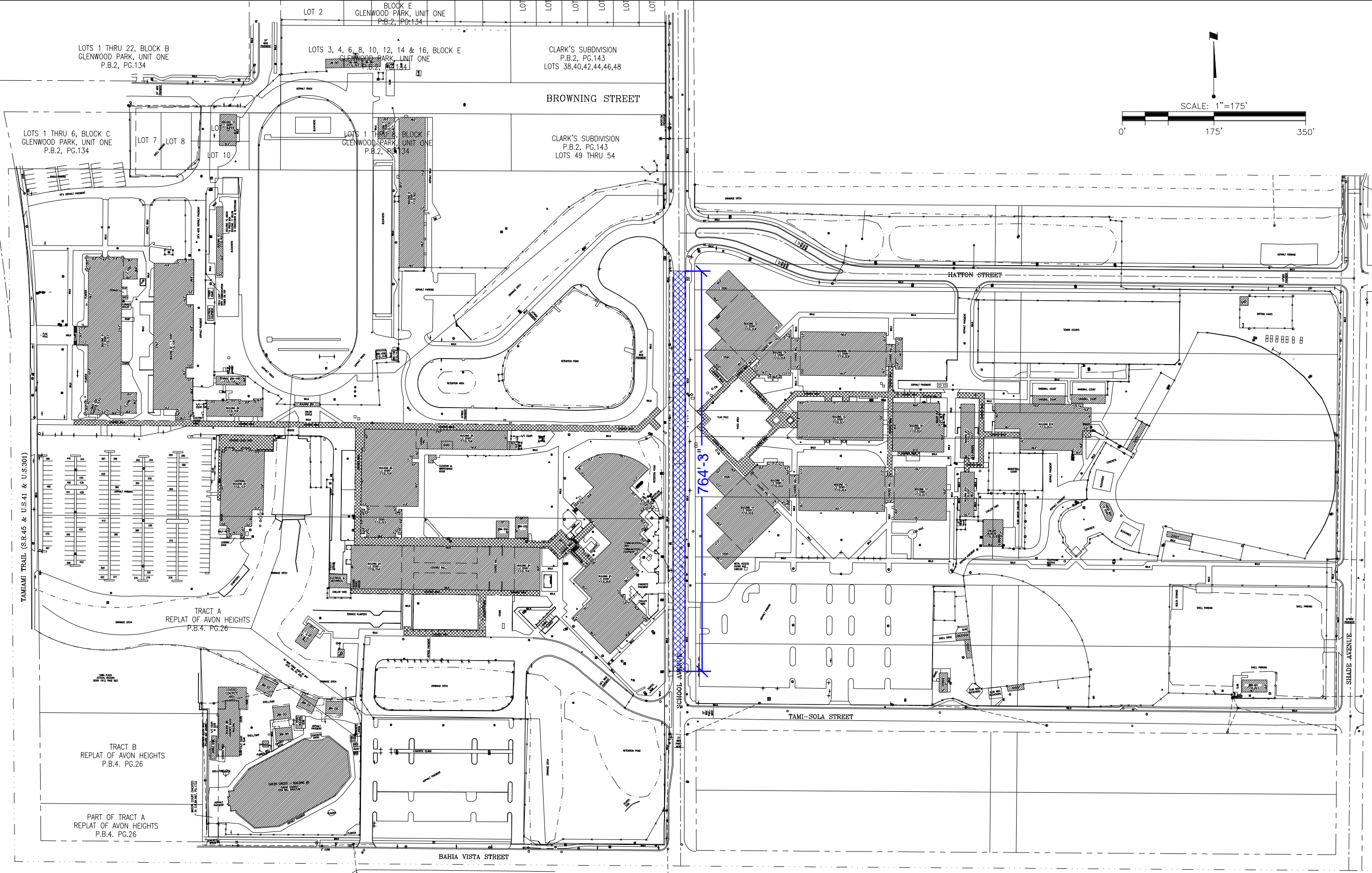
(Please take notes of any questions you may have during the presentation.)

III. Questions and Answers

IV. Follow Up

- A. Summary sent to all attendees
- B. Please make sure you have signed-in

NOTE: The City of Sarasota website address is www.sarasotafl.gov. On the home page under the "Meetings/Agendas/Video" link, select "Community Workshops" to access agendas, audio, and summary minutes of Community Workshops.



764'-3"

495,994 TOTAL SQUARE FEET OF BUILDINGS
 (THIS INCLUDES STORAGE, SHEDS, ELEVATORS)
 50,025 TOTAL SQUARE FEET OF COVERED WALKWAYS
 504,073 SQUARE FEET OF ASPHALT PAVEMENT
 FLAG POLE ON SCHOOL AVE. = 27°19'31" LATITUDE, 82°31'32" LONGITUDE
 NORTING = 1087739.4903, EASTING = 485522.0987

DATE	-
PROJ.	-
PAR. NO.	-
SCH. NO.	-
BLD. NO.	-
DWG. NO.	SUP-1

SARASOTA HIGH SCHOOL

THE SCHOOL BOARD OF
 SARASOTA COUNTY
 CONSTRUCTION SERVICES DEPARTMENT
 7895 FRUITVILLE ROAD
 SARASOTA, FLORIDA 34240

